



# FABRICS CATALOGUE

# table of **contents**

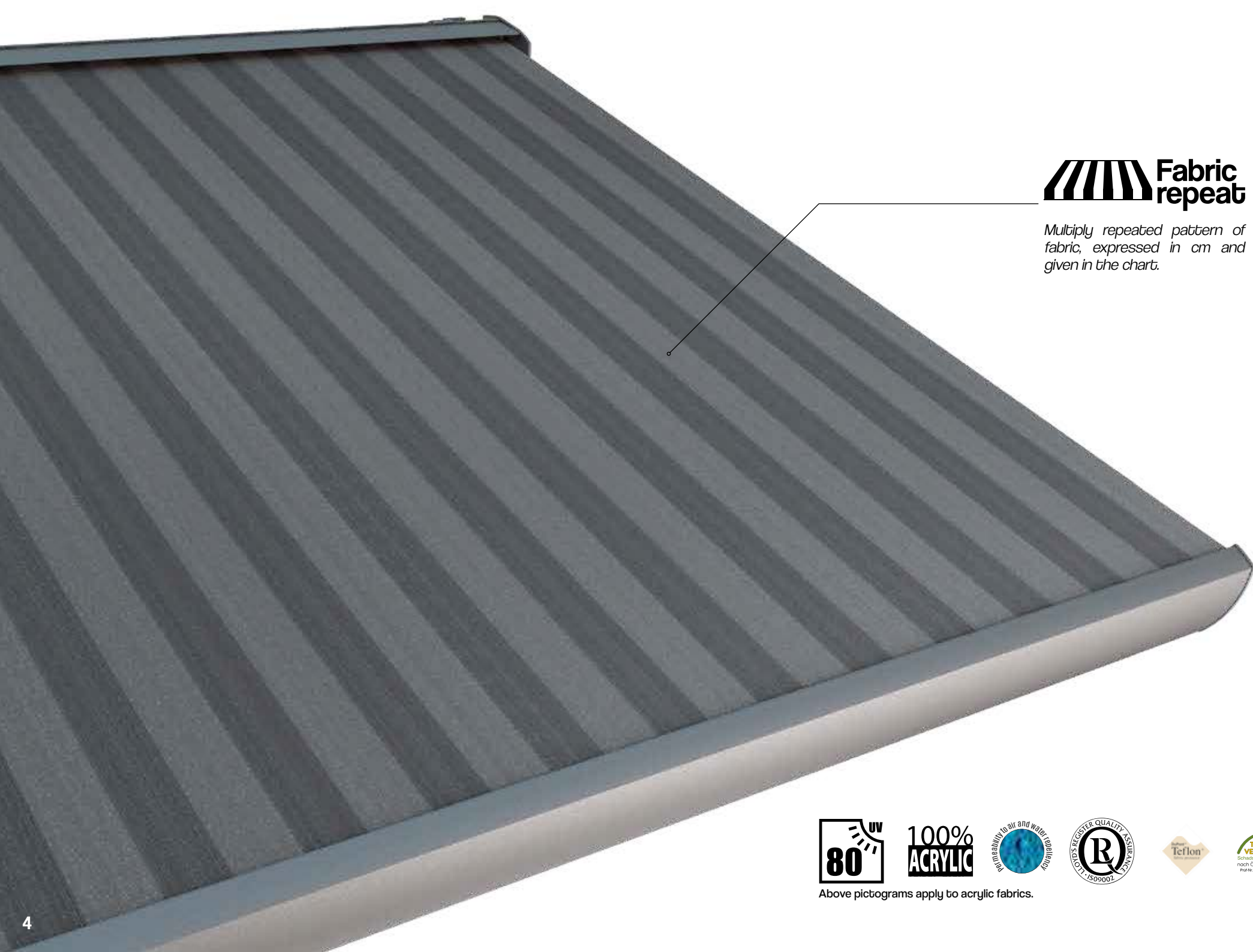
<b>awning fabrics .....</b>	<b>3</b>
solid awning fabrics.....	6
waterproof awning fabrics.....	12
orchestra awning fabrics.....	13
urban / landscape mini awning fabrics.....	14
landscape awning fabrics.....	15
classical / fantasy awning fabrics.....	16
<b>screen fabrics .....</b>	<b>21</b>
<b>pergola solid fabrics.....</b>	<b>29</b>



# awning

fabrics





 **Fabric repeat**

*Multiply repeated pattern of fabric, expressed in cm and given in the chart.*



**100%  
ACRYLIC**



Above pictograms apply to acrylic fabrics.



# ACRYLIC FABRICS

Technical data shown below are average values of the current production Die angegebenen technischen Daten sind Durchschnittswerte der laufenden Produktion Les données techniques ci-dessous sont des valeurs moyennes de la production courante		SOLID
Fabric Gewebe Tissu		Acrylic 100%, solution dyed Acryl 100%, spinnlösengefärbt Acrylique, 100% teint masse
Finishing Ausrüstung Traitement		Teflon - Cleangard
Weight Gewicht Poids total	DIN EN 12127	~ 300 g/m <sup>2</sup>
Width Warenbreite Laize		120 cm
Colour fastness Farblichkeit Solidité des coloris	DIN EN ISO 105-B02	7-8 / 8
Oil repellency Ölabweisung Oleofugation	EN ISO 14419	4-5
Water repellency Wasserabweisung Résistance au mouillage superficiel	EN ISO 4920	100
Water column Wassersäule Colonne d'eau	EN 20 811	~ 330 mm
Tensile strength (daN/5 cm) Höchstzugkraft (daN/5 cm) Résistance à la rupture (daN/5 cm)	DIN EN ISO 13934-1	~ 140 / 95
Tear resistance (daN) Weft / Warp Weberreißkraft (daN) Schuss / Kette Résistance à la déchirure (daN) Trame / Chaîne	EN ISO 13973-2	23 / 4

Acrylic fabrics guarantee the highest quality of the product, providing thermal comfort and protection against UV radiation. Made 100% out of acrylic fibre, dyed in chemical solution, provide excellent protection against colour loss. UV resistance coefficient is 7-8 at 8° scale. Impregnation with use of TEFLON® or SCOTCHGARD™ agents provides an excellent protective barrier and strengthens water-repellent qualities of the fabric, also preventing dirt adhering. Resistance to leaking: 330 mm water column. The advantage of acrylic fabric is also high resistance to tensile and tear. Permeability to air and water repellency. Above pictograms apply to acrylic fabrics.

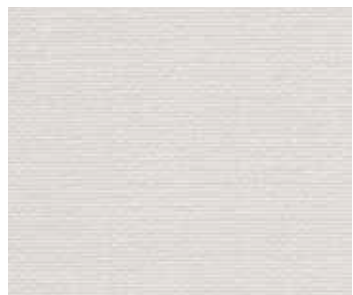


# WATERPROOF FABRICS

Technical data shown below are average values of the current production Die angegebenen technischen Daten sind Durchschnittswerte der laufenden Produktion Les données techniques ci-dessous sont des valeurs moyennes de la production courante		WATERPROOF
Fabric Gewebe Tissu		Acrylic 100%, solution dyed Acryl 100%, spinnlösengefärbt Acrylique, 100% teint masse
Finishing Ausrüstung Traitement		Teflon - Cleangard
Weight Gewicht Poids total	DIN EN 12127	~ 330 g/m <sup>2</sup>
Width Warenbreite Laize		120 cm
Colour fastness Farblichkeit Solidité des coloris	DIN EN ISO 105-B02	7-8 / 8
Oil repellency Ölabweisung Oleofugation	EN ISO 14419	4-5
Water repellency Wasserabweisung Résistance au mouillage superficiel	EN ISO 4920	100
Water column Wassersäule Colonne d'eau	EN 20 811	~ 1000 mm
Tensile strength (daN/5 cm) Höchstzugkraft (daN/5 cm) Résistance à la rupture (daN/5 cm)	DIN EN ISO 13934-1	~ 140 / 95
Tear resistance (daN) Weft / Warp Weberreißkraft (daN) Schuss / Kette Résistance à la déchirure (daN) Trame / Chaîne	EN ISO 13973-2	3 / 4

Waterproof acrylic fabrics are characterized by increased resistance to leaking - more than 800 mm water column. Weave structure together with modern impregnation technology provides high air permeability even on hot days. Oeko-Tex® guarantees that offered acrylic fabrics, subjected to special impregnation for water resistance, are not toxic.

# SOLID



**BLANCO**



**2042**

UV: 97% G<sub>tot</sub>: 18%

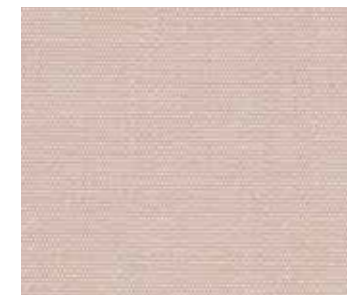


**NATURAL**



**2929**

UV: 97% G<sub>tot</sub>: 18%



**MARFIL**



**2143**

UV: 97% G<sub>tot</sub>: 16%

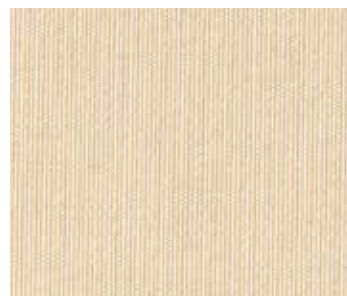


**SIROCO**



**2226**

UV: 98% G<sub>tot</sub>: 12%

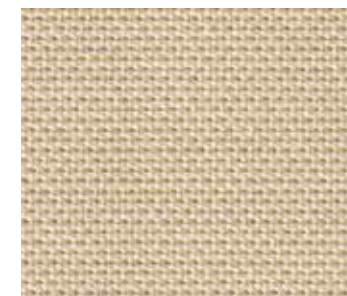


**VANILLA**



**2687**

UV: 97% G<sub>tot</sub>: 17%

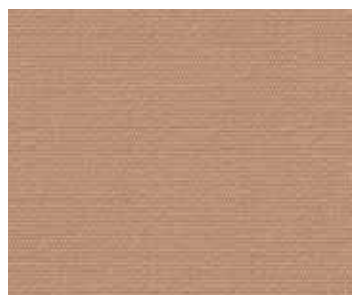


**AMBER  
BEIGE**



**0814**

UV: 99% G<sub>tot</sub>: 15.66%



**BEIGE**



**2038**

UV: 99% G<sub>tot</sub>: 11%



**INTEGRAL**



**2838**

UV: 99% G<sub>tot</sub>: 8%



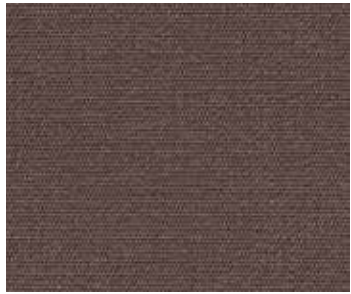
**AVENA**



**2296**

UV: 98% G<sub>tot</sub>: 11%



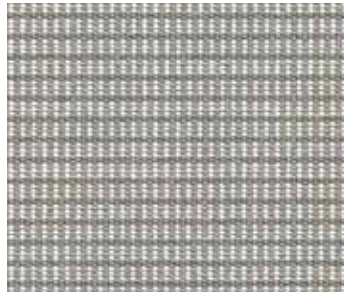


**MINERAL**



**2831**

UV: 99% G<sub>tot</sub>: 7%

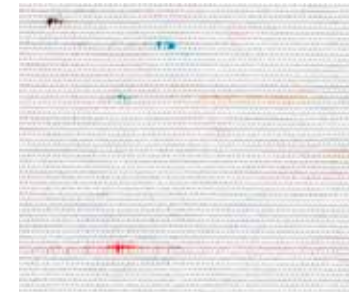


**MARBLE**



**0923**

UV: 99% G<sub>tot</sub>: 12.8%



**MULTICO  
FLAME**



**7131**

UV: 90% G<sub>tot</sub>: 17%

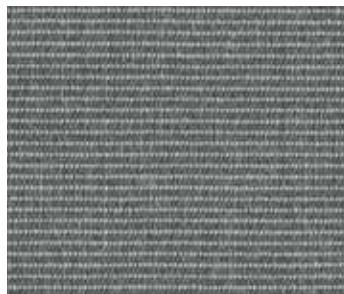


**NUAGES  
FLAME**



**6319**

UV: 90% G<sub>tot</sub>: 16%

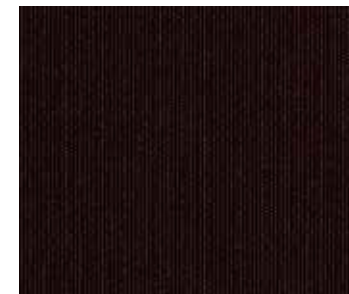


**TWEED  
ROCK**



**7151**

UV: 98% G<sub>tot</sub>: 11%



**CAFE**



**2316**

UV: 99% G<sub>tot</sub>: 5%

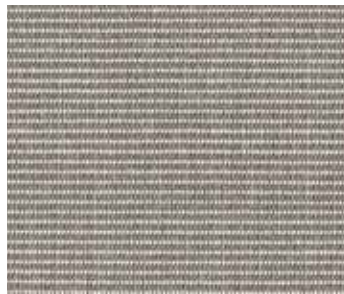


**BERNA**



**2041**

UV: 97% G<sub>tot</sub>: 16%



**TWEED  
LATTE**



**7926**

UV: 98% G<sub>tot</sub>: 15%

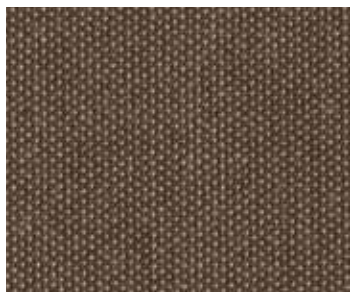


**VISION**



**2250**

UV: 99% G<sub>tot</sub>: 7%

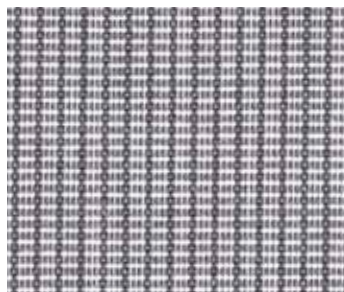


**CHAUME  
PIGUE**



**U235**

UV: 100% G<sub>tot</sub>: 9%

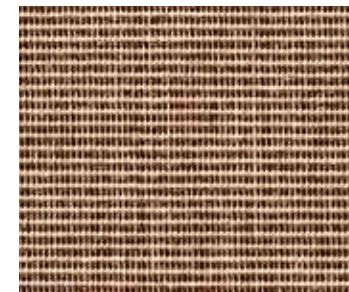


**IRON**



**0937**

UV: 99% G<sub>tot</sub>: 6.57%



**TWEED  
BROWN**



**0403**

UV: 99% G<sub>tot</sub>: 6.82%

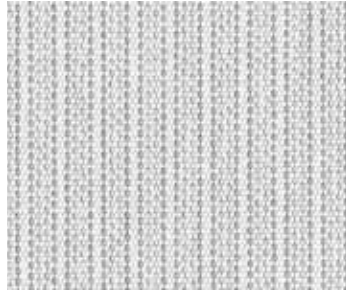


**LIN  
MELANGE**



**8904**

UV: 95% G<sub>tot</sub>: 11%



**SNOWFLAKE**



**3463**

UV: 95% G<sub>tot</sub>: 22%

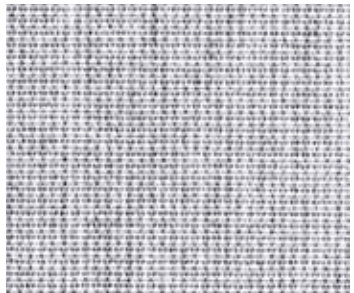


**TWEED  
ARGENT**



**0794**

UV: 98% G<sub>tot</sub>: 19%

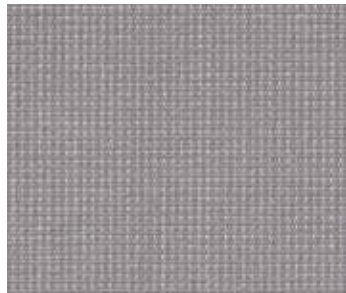


**DARK  
LINEN**



**6727**

UV: 98% G<sub>tot</sub>: 18%



**SILVER  
WHITE**



**0364**

UV: 99% G<sub>tot</sub>: 7.67%

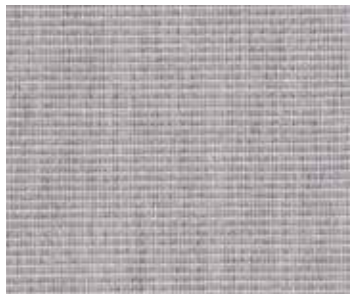


**SILVER**



**2821**

UV: 97% G<sub>tot</sub>: 13%

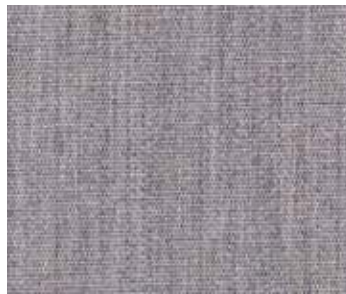


**SILVER  
GREY**

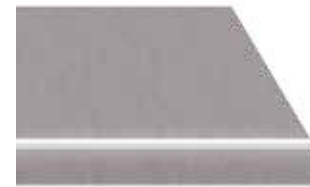


**U190**

UV: 90% G<sub>tot</sub>: 15%



**SILVER  
MELANGE**



**0028**

UV: 99% G<sub>tot</sub>: 7.36%



**STITCH  
ANDESITE**



**0512**

UV: 98% G<sub>tot</sub>: 8%



**PERLA**



**2979**

UV: 97% G<sub>tot</sub>: 8%



**PIETRA  
BEIGE**



**9415**

UV: 98% G<sub>tot</sub>: 8%



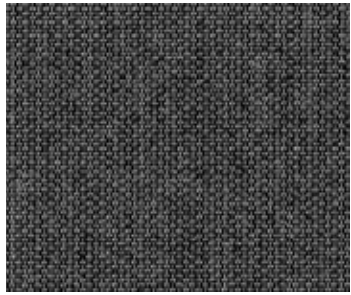
**ZINC**



**5802**

UV: 99% G<sub>tot</sub>: 11%





**ASH**



**0638**

UV: 99% G<sub>tot</sub>: 5.05%



**ANTRACITA**



**8488**

UV: 99% G<sub>tot</sub>: 6%

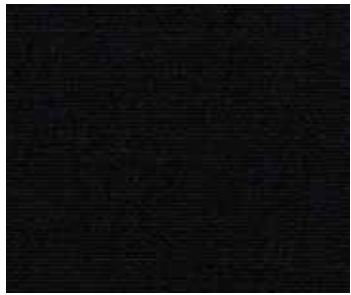


**EBONY TWEED**



**7324**

UV: 98% G<sub>tot</sub>: 10%



**NEGRO**



**2170**

UV: 99% G<sub>tot</sub>: 5%



**GRAPHITE ZIP**



**1524**

UV: 98% G<sub>tot</sub>: 12%

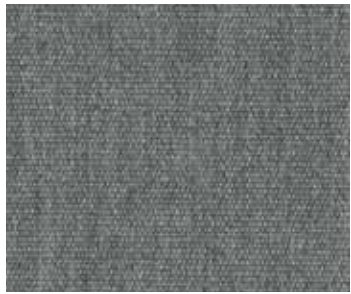


**BASALT**



**8203**

UV: 100% G<sub>tot</sub>: 5%

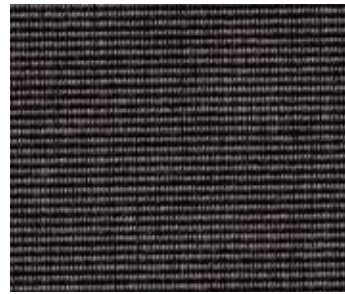


**FLANELLE**



**U104**

UV: 100% G<sub>tot</sub>: 5%

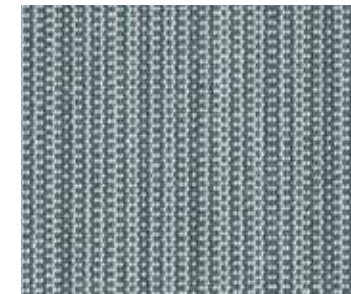


**CHARCOAL TWEED**



**0402**

UV: 99% G<sub>tot</sub>: 5%



**ZIP GREY**



**1597**

UV: 98% G<sub>tot</sub>: 13%

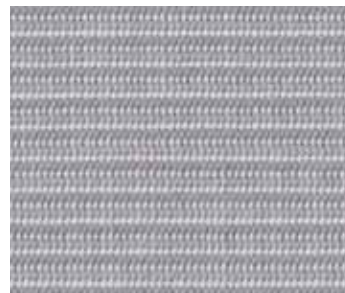


**STITCH CALCITE**

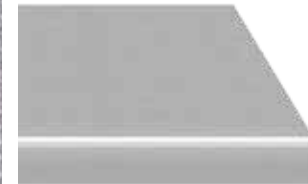


**0505**

UV: 98% G<sub>tot</sub>: 9%

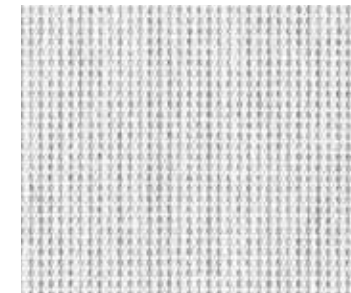


**PLATINUM**

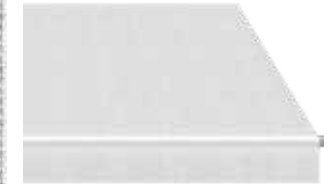


**0715**

UV: 90% G<sub>tot</sub>: 12%

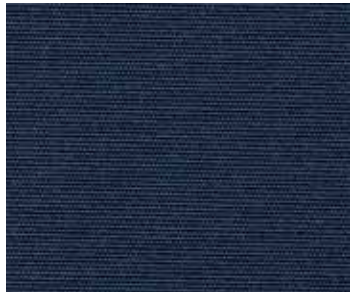


**WHITE LINEN**



**8615**

UV: 95% G<sub>tot</sub>: 18%



**BREEZE**



**2777**

UV: 99% G<sub>tot</sub>: 6%



**AZUL**



**2018**

UV: 99% G<sub>tot</sub>: 7%



**MARINE**



**2145**

UV: 99% G<sub>tot</sub>: 5%



**PIMENT  
FIGUE**



**U412**

UV: 100% G<sub>tot</sub>: 10%



**BRIGHT  
RED**



**2211**

UV: 99% G<sub>tot</sub>: 10%



**RIOJA**



**2210**

UV: 99% G<sub>tot</sub>: 8%



**CARMIN  
FIGUE**



**U411**

UV: 100% G<sub>tot</sub>: 10%



**SWITCH  
ROGUE**



**U390**

UV: 100% G<sub>tot</sub>: 8%

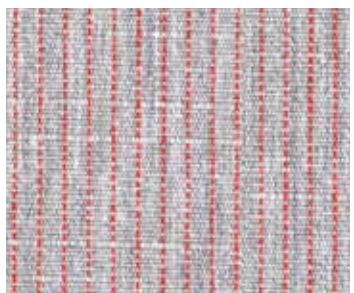


**GRANATE**



**2101**

UV: 99% G<sub>tot</sub>: 6%



**STITCH  
RUBY**



**0507**

UV: 98% G<sub>tot</sub>: 9%



**MARSEILLE  
FLAME**



**8854**

UV: 100% G<sub>tot</sub>: 11%



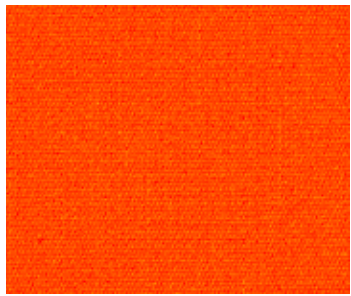
**AMARILLO**



**2013**

UV: 99% G<sub>tot</sub>: 15%



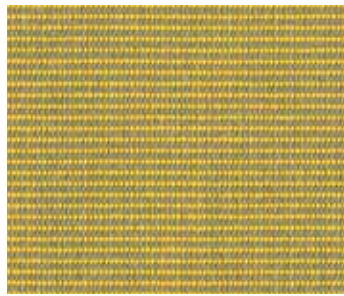


**ORANGE**



**2050**

UV: 99% G<sub>tot</sub>: 13%



**TWEED  
SENAPE**



**0034**

UV: 99% G<sub>tot</sub>: 6.3%



**CURRY**



**U105**

UV: 100% G<sub>tot</sub>: 12%

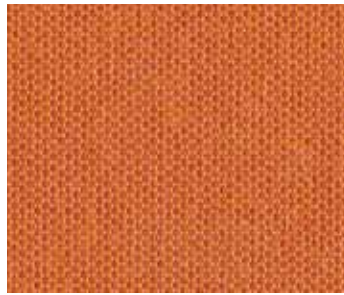


**OCRE**



**2180**

UV: 99% G<sub>tot</sub>: 13%



**POTIRON  
PIGUE**



**U413**

UV: 100% G<sub>tot</sub>: 10%

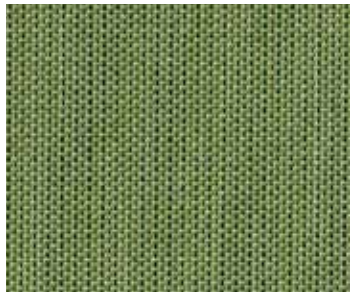


**MELEZE  
PIGUE**



**U417**

UV: 100% G<sub>tot</sub>: 8%



**JADE**



**0396**

UV: 99% G<sub>tot</sub>: 8.12%



**VERDE  
BOTELLA**



**2245**

UV: 99% G<sub>tot</sub>: 6%



**SWITCH  
EMPIRE**



**U393**

UV: 100% G<sub>tot</sub>: 8%

# FABRICS CATALOGUE

All specifications, design and color of products are up to date at time of forwarding this catalogue to print.  
The manufacturer reserves the right to make changes without prior notice.  
Due to the printing process any color reproductions are for illustration purposes only,  
their deviation from the actual color cannot constitute grounds for complaint.  
Folder reproduction in whole or in part is forbidden without the written permission of SOLARMATIC-  
Sonnenschutz GmbH